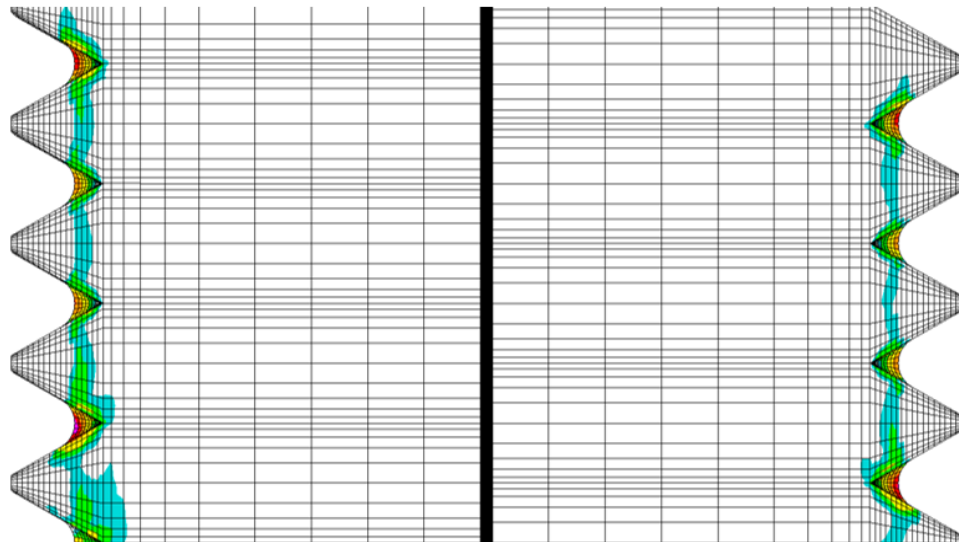


# RESIDUAL STRESSES IN STRUCTURAL ANALYSES

## Problem Description

- It is widely acknowledged, that residual stresses present in a part, can affect its behaviour considerably. One source for residual stresses is manufacturing.
- In order to include the effect of residual stresses in a structural analysis, a mapping of stresses and strains between different software packages is necessary.



## Objectives & Tasks

- Investigate how to couple the different software packages efficiently.
- Create an automated workflow between different parts of the analysis.
- Benchmark the results on an HILTI relevant example.

